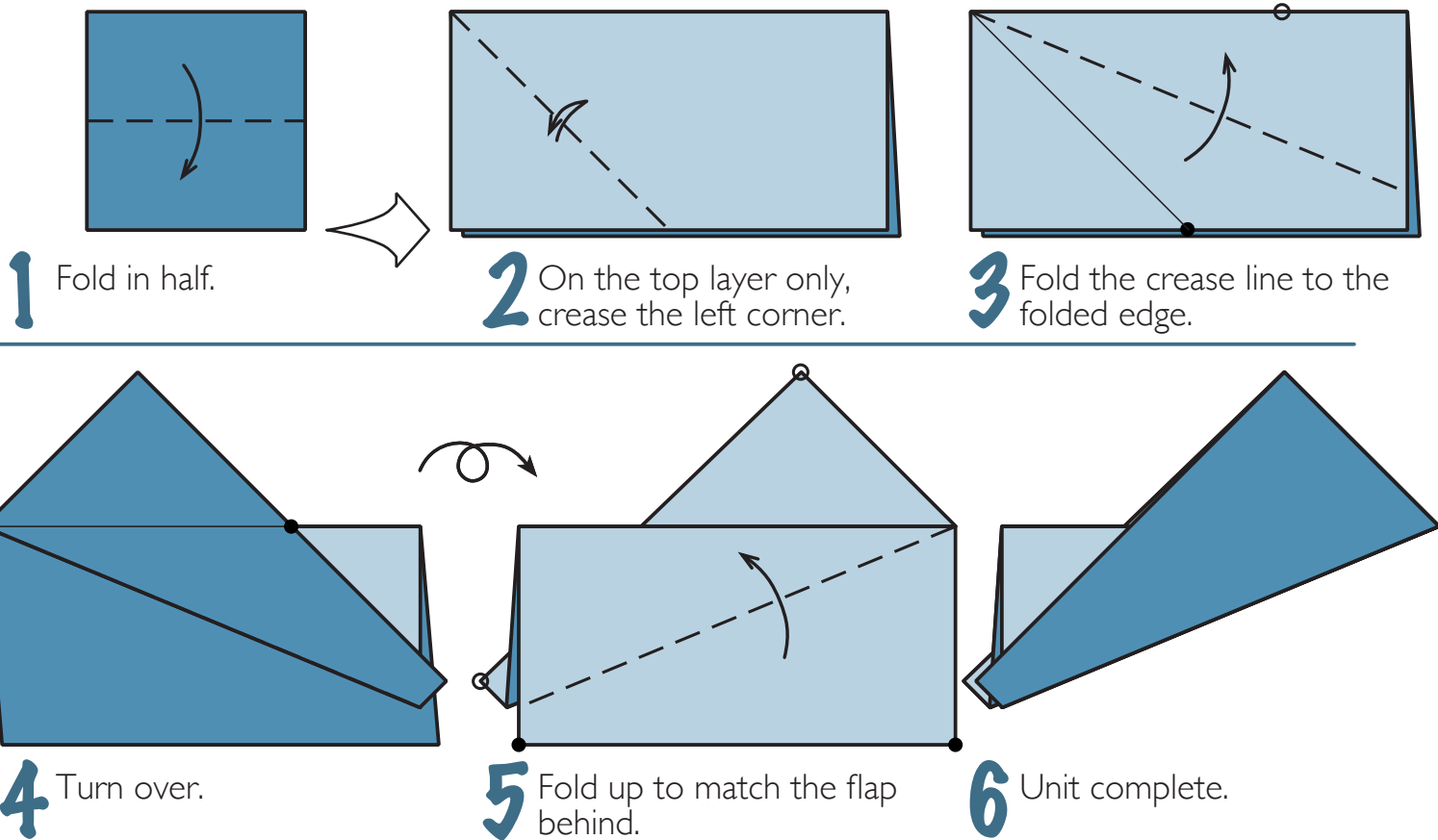


# Star 8 Octad

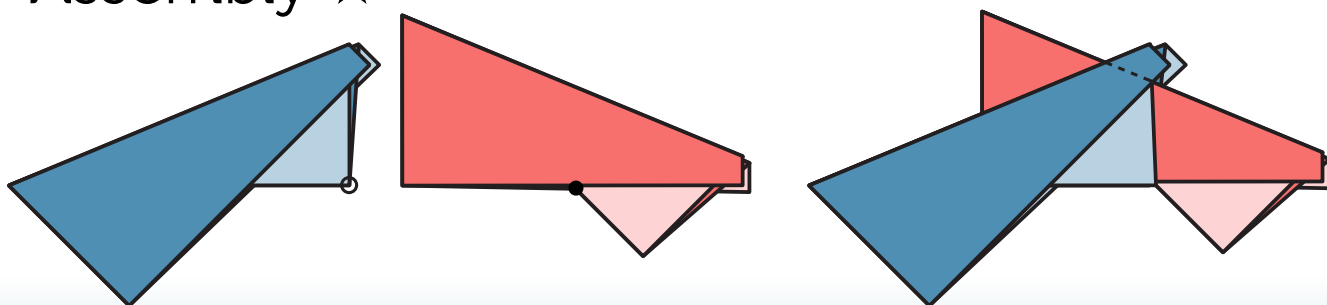
★  
Use eight 75 mm squares  
or larger  
Finished model ratio 1.8

**T**his model works well from paper that is white on one side and coloured on the other side. You can easily adapt the folding sequence for a different number of units and differently proportioned rectangles.

## Module ★



## Assembly ★



- 1** Insert the second unit into the first.
- 2** Fold the tips of the first unit inside the second to lock.
- 3** Continue adding units in a clockwise direction.